



FLEMING 55

“Whatever type of boating you do, the wish list for your perfect boat would probably read like this: a spacious and airy interior, unsurpassed engineering, sure-footed handling, monumental construction, and a superb finish. You might also fancy a boat that’s extraordinarily quiet inside and out. The Fleming 55 would fulfill all your wishes. It remains a benchmark that few other boats can approach.” – Motorboat and Yachting



The pilothouse provides a dedicated control station which immediately brings to mind the bridge of a ship or the cockpit of an airliner. This is the nerve center of the boat where the serious business of conning the vessel takes place. The navigation area includes a chart table and drawers and a console large enough to accommodate a complete range of electronics. A second overhead console provides more space for additional equipment. The windshield is sloped at just the right angle and all the controls and instruments are to hand. Just sitting in the captain’s chair gives you the immediate feeling of being in full control and seeing yourself piloting this little ship into your favorite berth or anchorage whether real or imagined.



Yet the pilothouse is also a social center where people congregate to enjoy the scenery. A small table and a raised settee are ideal for reading or enjoying casual meals while underway. Easy stairs give safe access to all parts of the vessel so you can be secluded from the bustle of other on-board activities without being isolated. Feeling your way into an unfamiliar harbor at night with the aroma from a hot meal being prepared in the galley is a pleasure denied to those whose galley is integrated with the pilot station.





FLEMING 55

The Philosophy behind the Fleming 55 is to create a serious cruising yacht capable of taking her crew in safety and comfort from trendy marinas to remote anchorages. Her space and amenities make her idea for entertaining yet she is truly a home away from home.

*Her combination of speed, range, seaworthiness, comfort and good looks give her unrivaled versatility.
“A home away from home. Attention to detail raises the ante for this long range cruiser” – Yachting Magazine*



As you relax on the upholstered settee in the salon your eye takes in the richness of the teak exquisitely shaped by those craftsmen who know their trade. Essential to that feeling of relaxation is the harmony provided by the meticulous scaling of each and every piece of furniture and by the attention to detail. The design is practical yet elegant. Picture windows promote an airy feel while privacy and ventilation are maintained by wood blinds retained in teak guides to control lateral movement. Just two steps lead up to the pilothouse and three down to the accommodation. Double doors open out onto the aft deck on the same level. A range of cabinets are available which provide for bar with icemaker, drinks refrigerator or wine cooler. An entertainment center can be configured for audio and video components as well as built-in or pop-up flatscreen TV. The teak table can be raised or lowered for use as a coffee table or for dining.



Fine dining plays an essential role in any successful cruise and food preparation should not be a burden to those who do it. This means a well planned and equipped galley in which they can work safely without being tucked away in some forgotten corner or located higher than necessary above the waterline where boat movement is exaggerated. The standard galley in the Fleming is an extension to the salon. It is equipped with a 21 cubic ft side-by-side fridge/freezer so there is no need to stoop to reach inside. The doors have sea locks. There is a convection microwave with built-in light and hood over the ceramic, easy-to-clean cook top equipped with the increasingly rare – but absolutely essential – potholders of a design unique to the Fleming. Double sinks – one with disposal – are set into granite or Corian™ countertops. A trash compactor is standard and space is provided for optional dishwasher and oven. The galley is compact – as it should be in a sea-going vessel – and everything is to hand without being cramped. A dumb waiter connects the overhead locker with the flying bridge.





FLEMING 55

“The beautiful Fleming 55 is a paragon of modern boat design and attention to detail. Appointed in a traditional yacht manner with teak decks and trim, the Fleming is nonetheless a thoroughly modern boat using the latest technology. The result is a very capable cruising motoryacht with all around ability.” – Passagemaker Magazine.

“The hull slides almost wakelessly through the water and engine vibration is practically nil. As a result the loudest sound inside the boat is the rush of water past the hull” – Sea Magazine.

*“The look of the Fleming 55 virtually defines the terms classic and timeless.”
– Power Cruising Magazine.*

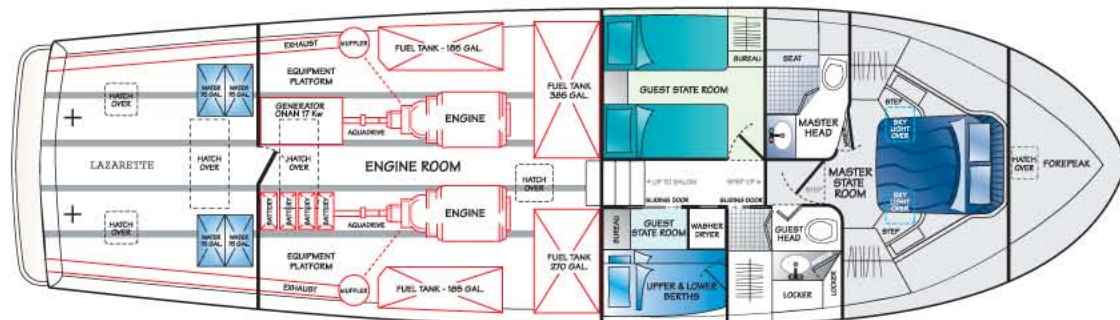
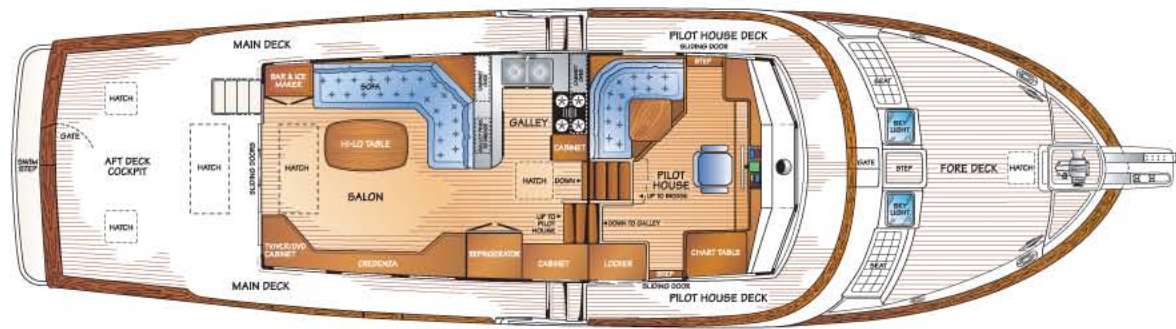
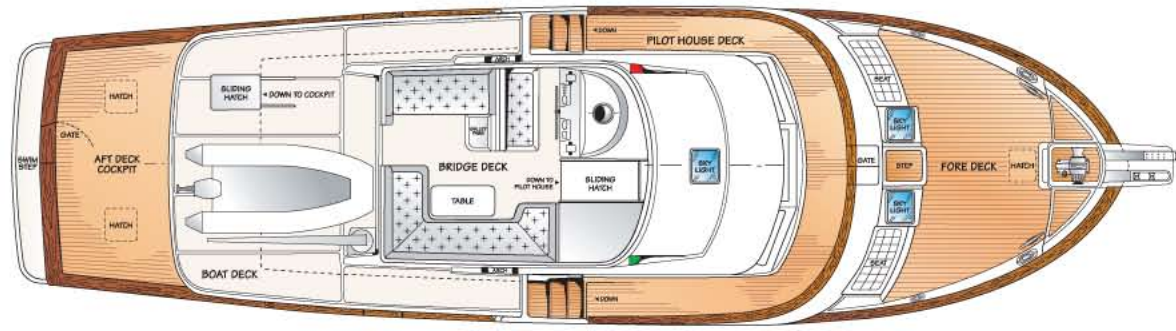


At the end of the day, a comfortable bed is essential to the refreshment of mind and body. The forward stateroom is light and airy with portlights and skylights. The bed lifts open easily at the touch of a button to give easy access to storage space for bulky items such as towels and blankets. Hanging lockers to both port and starboard, with drawers beneath, provide ample storage. The head is ensuite and, in common with the guest head, is equipped with china basin set in Corian™ or granite countertop, Headhunter toilet and separate shower.

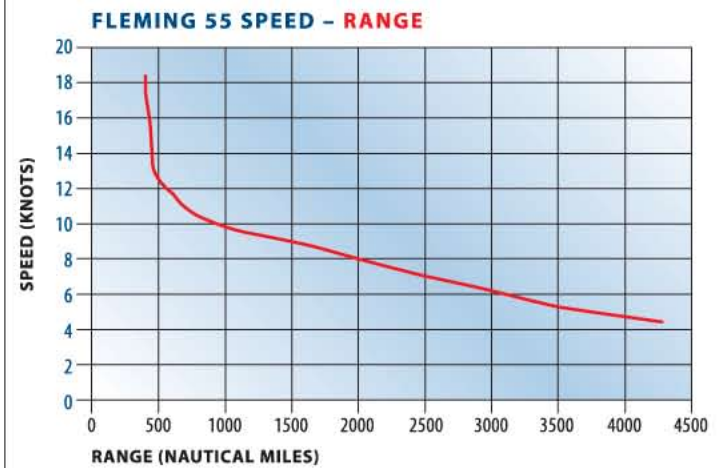
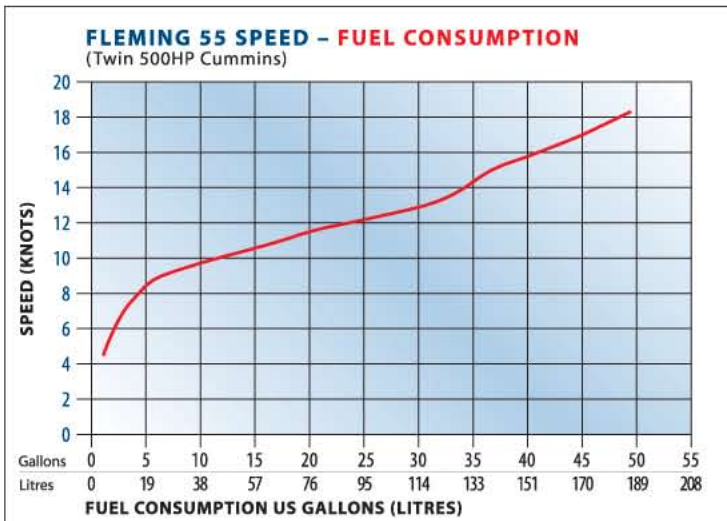
The port guest stateroom can be offered with twin berths or one double and, with either arrangement, an optional slide-out upper berth. The starboard guest cabin can be configured with twin bunks or as an office – with or without an upper berth. In all three staterooms, reading lights are placed in convenient locations and there is ample stowage for gear and clothes.

Please note: Some of the pictures presented in this brochure may show non-standard options.





Fleming 55		
Length Overall Hull (LOA)	55'9"	16.99m
LOA incl. swim platform and anchor platform	60'9"	18.50m
LWL	50'10"	15.50m
Beam	16'	4.88m
Draft	5'	1.52m
Air draft to top of arch	16'	4.88m
Displacement	66,000lbs	30,000kg
Hull type	Semi displacement	
Fuel	1000 US Gallons	3,880litres
Water	300 US Gallons	1,135litres
Standard engines	Cummins QSC8.3 – 500HP	



Please note: Speeds and consumption are approximate and are dependant upon many factors.